

Towne Avenue

- **LOCATION:** POMONA, CA
- **TYPE:** DETACHED CONDO
- **DENSITY:** 8.99 D.U. /AC
- **S. F.:** 1,497 – 1,637

Nestled amidst an established neighborhood, and positioned along a major thoroughfare, Towne Avenue was conceptualized as a unique, gated enclave offering moderately-priced detached homes with sensitivity to the needs and desires of the young family buyer profile.

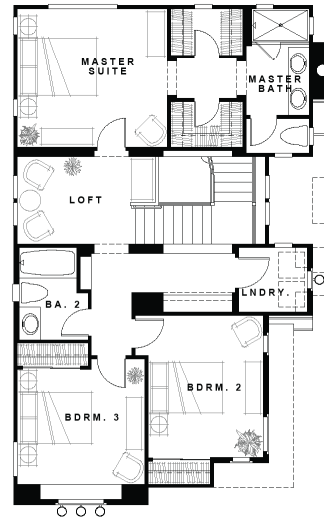
Individual floor plans were designed in an effort to distribute square footage effectively, and to minimize any dedicated circulation space. With the primary focus being efficient livability, bedroom count was maximized and furnishability of all spaces was paramount. Impact drama has been infused into the plans by carving volume ceiling spaces which are experienced upon entering the house, as well as from the primary living areas. The exterior architectural character respects that of the established neighborhood, but does so via a fresh interpretation of both spanish colonial and craftsman styles. The completed project represents a thoughtfully-conceived infill housing solution that successfully appeals to the target market profile, and reinforces the positive aspects of the community



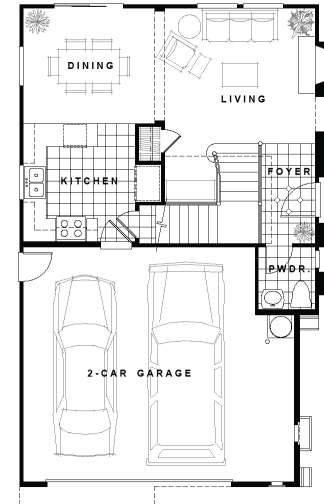
SIDE ELEVATION



FRONT ELEVATION



SECOND FLOOR



FIRST FLOOR

PLAN 1

SINGLE-FAMILY DETACHED

