

# Vino Terazza

- **LOCATION:** ALTADENA, CA
- **LOT SIZE:** 50' x 135'
- **S. F.:** 2,687 – 2,906

The design of this home draws its inspiration from the rich architectural heritage of Altadena, California, and the surrounding communities. Carefully sited along an intimate neighborhood street, the massing of the front portion of the house has been kept to one-story proportions in an effort to sensitively relate to the one-story nature of adjacent homes on the street.

The rear portion of the house rises to two-stories, and provides views looking over the one-story casita towards the San Gabriel Mountains. The entry court plays an important role by introducing an element of intrigue as one passes through the portico and approaches the entry turret. And by gating the motor court, its use as outdoor entertaining space is further emphasized. The outdoor stair leading up to the home's signature vino terraza with its 360 degree views, becomes an architectural feature accessed from this "courtyard."

Additionally, a covered entry to the casita has been cleverly tucked beneath this exterior stairway. The exterior architectural styling is decidedly spanish colonial, with a material palette that includes, smooth stucco, exposed wood rafter tails, beams and outlookers, hand-wrought ornamental iron, and clay tile roof. The result is a home that reflects a casual elegance and refinement, and does so with timeless architectural character.



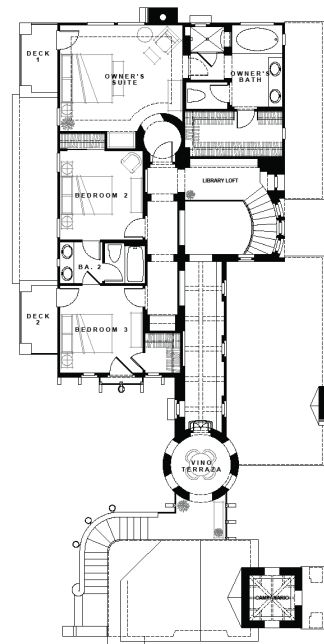
FRONT ELEVATION



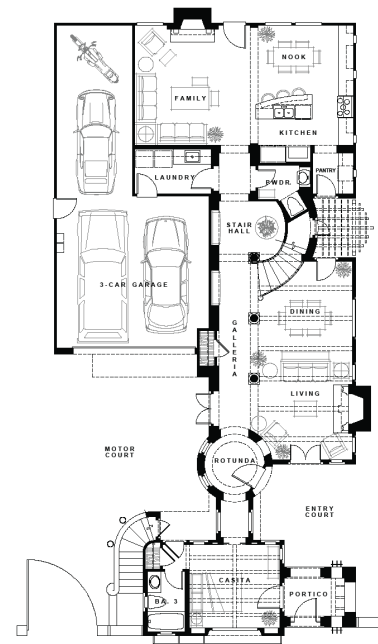
RIGHT SIDE ELEVATION



LEFT SIDE ELEVATION



SECOND FLOOR



FIRST FLOOR



REAR ELEVATION



CUSTOM RESIDENTIAL





