

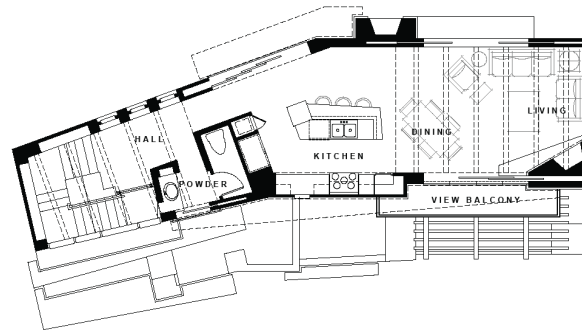
Venice Hills 48

- **LOCATION:** MT. WASHINGTON, CA
- **TYPE:** UPHILL
- **LOT SIZE:** 75' x 60'
- **S. F.:** 1,898

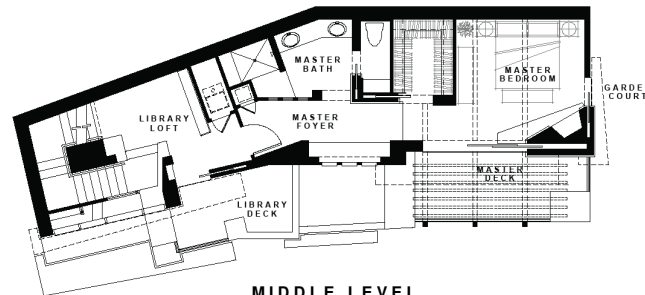
The building site for this project was equally unique in its extreme topography and opportunity for a strong architectural statement. In addition to the obvious challenges presented by such a steep uphill site, the project's design criteria proved to be quite limiting, yet inspired an architecture with a decidedly modern aesthetic.

The solution is a 3-story structure with a dramatic stair shaft which provides access to the primary living areas on the upper level. The 3-story view potential is maximized from the living and dining areas by incorporating a large pocketing door which provides access to a view balcony. The rear yard is accessed from the entertaining style kitchen with oversized island. The middle level is entirely dedicated to the master bedroom, which includes a trellised master deck positioned directly over the 2-car garage. And the secondary bedrooms are located on the lower level, where they may flex to become office or studio space.

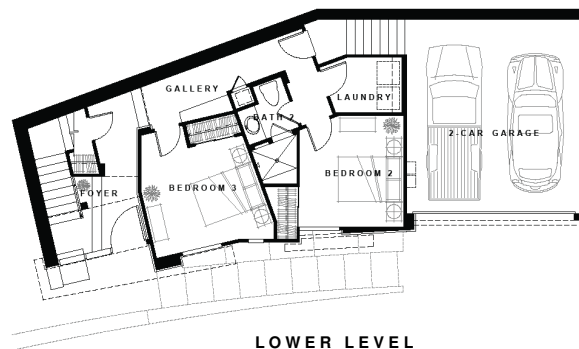
The elevation is composed of a careful massing of vertical wall planes pierced by a series of metal shade blades, resulting in a dynamic play of intersecting elements. In the final analysis, this residence represents a living environment which welcomes the finest aspects of a sophisticatedly modern lifestyle.



UPPER LEVEL



MIDDLE LEVEL



LOWER LEVEL



FRONT ELEVATION



SIDE ELEVATION



REAR ELEVATION

HILLSIDE RESIDENTIAL

